

The top row of curved bricks is moved inwards to touch and support the steel ring.

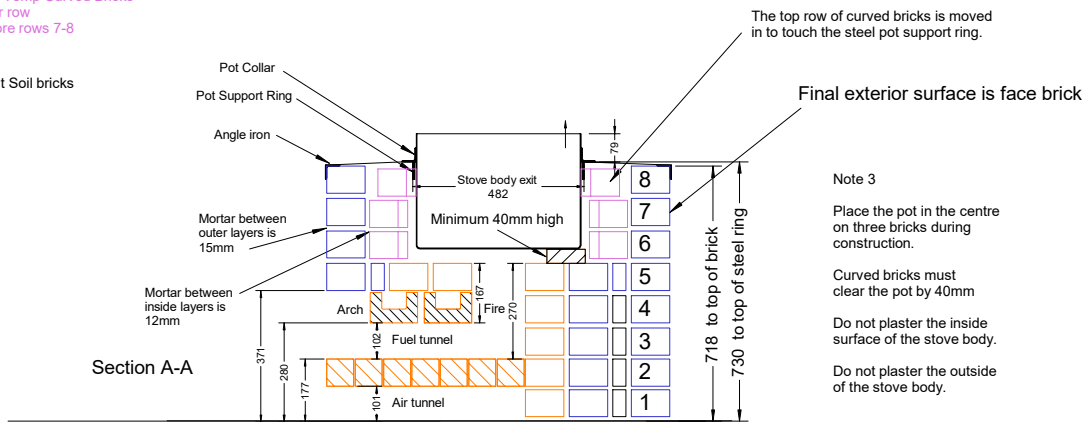
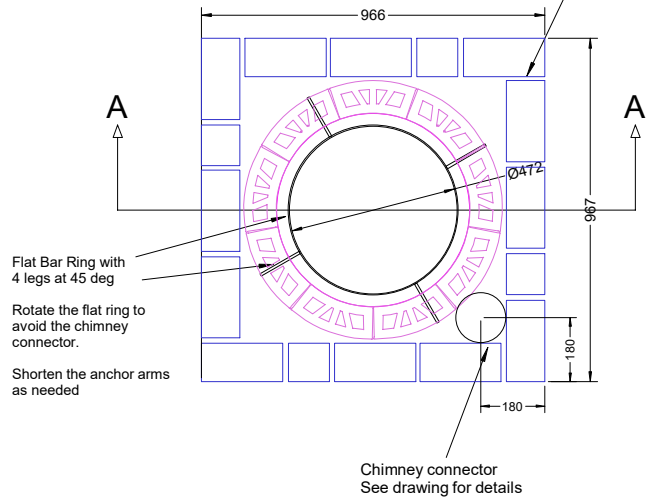
Fill with rubble and cement or pumice except the top row which shall be solid bricks and mortar.

Select bricks  
16 per row  
2 more Rows  
= 32

High Temp Curved Bricks  
9 per row  
2 more rows 7-8  
= 18

Burnt Soil bricks  
12

Read the notes!



Note 3

Place the pot in the centre on three bricks during construction.

Curved bricks must clear the pot by 40mm

Do not plaster the inside surface of the stove body.

Do not plaster the outside of the stove body.

Note 1

The body with steel will be  $966+6 = 972$  mm wide.

The height at the edge will be  $718+3 = 721$  mm.

The overall height of the brickwork is not critical as the collar can be moved on the pot.

Note 2

The mortar thickness between the curved bricks is assumed to be 12 mm. Only Fire Cement (fire clay mortar) should be used with bricks exposed to high temperature which includes the firebox, the fuel shelf and all the curved bricks.

Do not use Ordinary Portland Cement (OPC) mixed with "grog" as that mix is not fireproof. OPC burns away at  $400^{\circ}\text{C}$ .

To achieve a good bond, each brick should be dipped in water before being buttered and pressed into place. The Fire Cement should be wet enough so each brick can be vibrated by hand to achieve a solid, wet bond with 12 mm thickness.

Using the pot as a form, make a small 40 mm thick spacer to set the distance from the pot to the curved brick.

# Layers 7-8

2024 MEMD 50 LITRE STOVE

Key Features:

Primary air is supplied between the bricks under the fuel

Bricks block direct exit of gases

Brick combustion chamber

Material: Brick and High temperature brick

Quantity: Various

Scale: Not to scale

Drawn By: C Pemberton-Pigott

Version: 1.4 Date: 2024-12-17 Initials CPP

Drawing No. 14 MEMD 50 Litres - Layers 7-8

Part Bricks: Layers 8-10